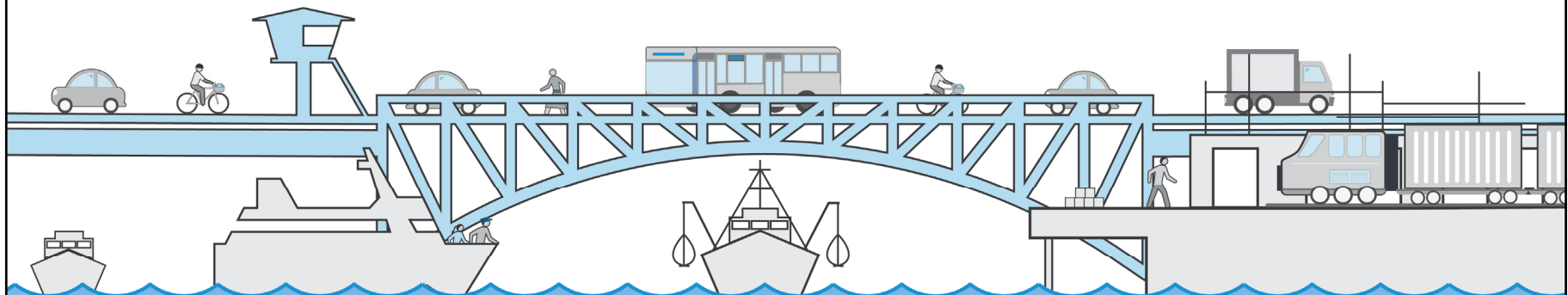


# Ballard-Interbay Regional Transportation System Study

## Interagency Team Meeting #3



SDOT Policy & Planning  
May 21, 2020

Visit [www.tinyurl.com/BallardInterbay](http://www.tinyurl.com/BallardInterbay) to provide comment!



**City of Seattle**

## Meeting agenda

- 11:30 Welcome and Meeting Protocols
- 11:45 Stakeholder Engagement Updates
- 12:00 Future Scenarios and Evaluation Framework
- 12:25 Planning Context and Multimodal Needs Assessment
- 12:55 **\*\*Public Comment\*\***
- 1:25 Next Steps and Action Items



## Meeting objectives

- Provide clear information about project status, including work underway and completed
- Gather input and direction on the alternatives and approach to evaluation
- Solicit feedback on identified gaps and needs to inform project development



## Welcome & Meeting Protocols

- Do you have questions about the meeting protocols or objectives?

Visit [www.tinyurl.com/BallardInterbay](http://www.tinyurl.com/BallardInterbay) to provide comment!



**City of Seattle**

## SDOT mission, vision, and core values

### **Mission:**

To deliver a transportation system that provides safe and affordable access to places and opportunities

### **Vision:**

Seattle is a thriving, equitable community powered by dependable transportation

### **Committed to 6 core values:**

- Equity
- Safety
- Mobility
- Sustainability
- Livability
- Excellence



# Meeting protocols

## For IAT members:

- Work from a shared screen (viewing the presentation together)
- Use video when possible
- Ask questions and collaborate for group discussion in the chat window throughout the meeting
- Interrupt if we're not "seeing" you!



# Meeting protocols

## For community members:

- This meeting is being recorded
- Guests are muted throughout the meeting to support presentation and IAT discussion
- Guests can sign up at the link below to speak or indicate interest in the chat window
- Public comments will be invited at 12:55 PM for a 30-minute period
- Additional comments may be submitted in writing at any time

[www.tinyurl.com/BallardInterbay](http://www.tinyurl.com/BallardInterbay)



## IAT member introductions

- Share one thing your agency has done to creatively adapt business, outreach, or strategy during COVID-19
- Identify one take-away you hope to have from today's meeting





# Ballard-Interbay Regional Transportation System (BIRT)

The Washington State Legislature asked SDOT to develop a report on how to improve travel for people and goods in Ballard-Interbay.



## 2019 Washington State legislative language

### ESHB 1160 – Section 311(18)(b)

“Funding in this subsection is provided solely for the city of Seattle to develop a plan and report for the Ballard-Interbay Regional Transportation System project to **improve mobility for people and freight**. The plan must be developed in coordination and partnership with entities including but not limited to the city of Seattle, King county, the Port of Seattle, Sound Transit, the Washington state military department for the Seattle armory, and the Washington State Department of Transportation.

The plan must **examine replacement of the Ballard Bridge and the Magnolia Bridge**, which was damaged in the 2001 Nisqually earthquake. The city must provide a report on the plan that includes **recommendations to the Seattle city council, King county council, and the transportation committees of the legislature by November 1, 2020**. The report must include recommendations on how to **maintain the current and future capacities** of the Magnolia and Ballard bridges, an overview and analysis of all plans between 2010 and 2020 that examine how to replace the Magnolia bridge, and recommendations on a **timeline for constructing new Magnolia and Ballard bridges**.”



# Project elements

## Review Existing Plans and Previous Studies

- Summarize findings and document guiding assumptions



## Forecast and Assess Multimodal Integration

- Forecast future conditions
- Assess traffic, freight, and multimodal strategies



## Analyze Impacts & Benefits of Bridge & System

- Conduct social and economic cost/benefits analysis



## Bridge Replacement Timeline & Funding Strategy

- Develop timeline and funding approach for replacement of bridges



## Report to WA Legislature

- Draft in September, submit November 1, 2020



## Stakeholder Engagement Updates

- What are you hearing from stakeholders and your colleagues?
- Do you have suggestions for other virtual engagement opportunities or individuals with whom we should engage?

Visit [www.tinyurl.com/BallardInterbay](http://www.tinyurl.com/BallardInterbay) to provide comment!



**City of Seattle**

## Community outreach update

### Meetings open to the public

- Kickoff Meeting Ballard
- Kickoff Meeting Magnolia
- Seattle Freight Advisory Board  
– 2 meetings
- Magnolia Community Council
- Ballard/Fremont  
Neighborhood Greenways
- Seattle Bicycle Advisory Board

### Meetings with organizations

- NSIA (North Seattle Industrial Association)
- Businesses in Interbay

### Meetings with elected officials

- Council Member Andrew Lewis – 2 meetings
- Representative Gael Tarleton – 2 meetings
- Representative Jake Fey – 1 meeting



## Ongoing inclusive outreach efforts

Identifying stakeholders for conversations with employees\* and employers:

- Reaching out to small and large businesses and their employees in Interbay (tenants and sub-tenants) through Port of Seattle introductions
- Call for interest on the Puget Sound Shipbuilders Association listserv
- Working with property managers of various small businesses in East Ballard and Fisherman's Terminal

*\*There is high representation by immigrants, people of color, and low-income people who work in the maritime industry.*



## Future Scenarios & Evaluation Framework

- Do you agree with the framework for the alternatives?
- Is anything missing from the future baseline assumptions?
- What questions do you have about the data inputs or proposed methods for the impact analysis?

Visit [www.tinyurl.com/BallardInterbay](http://www.tinyurl.com/BallardInterbay) to provide comment!



**City of Seattle**

# Study area roadways and intersections

The study area for the BIRT system project is generally bound by:

- Market Street (north)
- Pier 91 and the Expedia campus (south)
- 10th Avenue West (east)
- 28th Avenue West (west)

Will consider peak hour intersection operations, corridor travel times, and freight flows/access





## Multimodal traffic counts

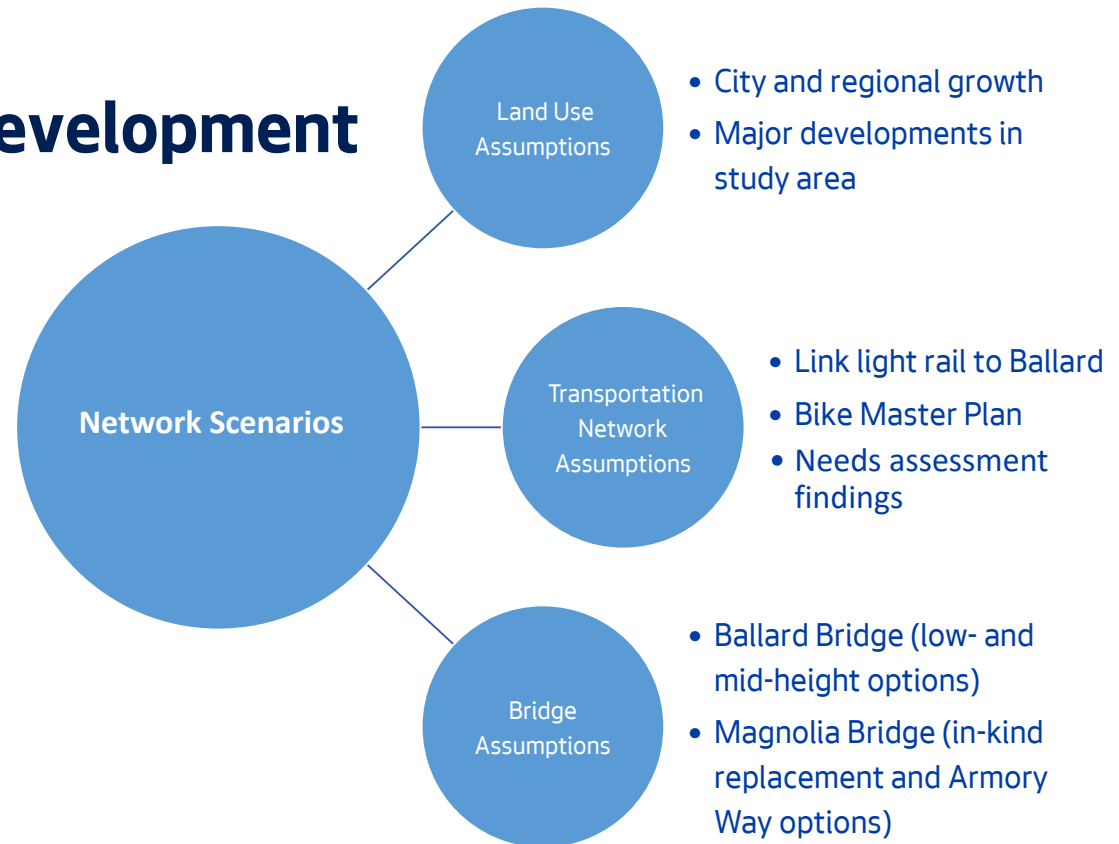
- Originally assumed that new multimodal traffic counts would be collected where counts are more than 2 years old or in areas where traffic is suspected to have increased
- Due to COVID-19 impacts on travel behavior and the tight timeline for this study, the project team leveraged existing data and professional judgement to reflect current conditions
- Traffic volume data collection focused on the 2-hour AM and PM peak periods to capture the time of day with the highest traffic demands



*Photo: Seattle Times*

## Future forecast development

- Up to four (4) alternatives will be evaluated
- Currently developing two (2), focusing on high and low bookends
- Additional alternatives will vary by land uses and reflect Mayor's Industrial and Maritime Strategy findings



# Future forecast development



*Magnolia Bridge: in-kind replacement and Armory Way*

*Ballard Bridge: low- and mid-height*



## Future forecast development

Investment Scenario	Magnolia Bridge	Ballard Bridge	Land Use	Transportation Infrastructure
<b>One</b>	In-Kind Replacement	Mid Level	2042 land uses consistent with West Seattle and Ballard Link Extension study, plus updated assumptions for: <ul style="list-style-type: none"> <li>• Armory</li> <li>• Terminal 91</li> <li>• Fishermen's Terminal</li> </ul>	<ul style="list-style-type: none"> <li>• ST Ballard Link Extension</li> <li>• Bike Master Plan</li> <li>• Additional supporting facilities TBD</li> </ul>
<b>Two</b>	Armory Way Concept	Low Level		



# Approach to project evaluation and selection

## Potential Investments

- Project ideas in planning documents
- Multimodal analysis
- Community and agency input



## Project Evaluation

- Goal 1. Improve mobility for people and freight
- Goal 2. Provide a system that safely accommodates all travelers
- Goal 3. Support timely and coordinated implementation



## Phased Improvements

- Evaluate and select projects
- Create phased project implementation plan per legislation

# Social and economic impact analysis

## Impacts to be studied:

- Travel time by mode
- Vehicle and transit operating costs
- Safety by mode
- Accessibility to housing, jobs, and non-work destinations
- Market desirability and property values
- Build costs





## Planning Context & Multimodal Needs Assessment

- Do these study area needs match your understanding?
- Are any of the potential investment opportunities shown problematic?
- Which of these opportunities are highest priority for your agency?

Visit [www.tinyurl.com/BallardInterbay](http://www.tinyurl.com/BallardInterbay) to provide comment!



**City of Seattle**

## Planning context themes

- Balance multimodal needs and access with bridge alternatives
- Preserve freight and local industrial access and minimize delay during bridge, roadway, or redevelopment construction
- Prioritize safety for the most efficient travel modes and vulnerable travelers
- Manage drive-alone demand and parking access in redevelopment areas

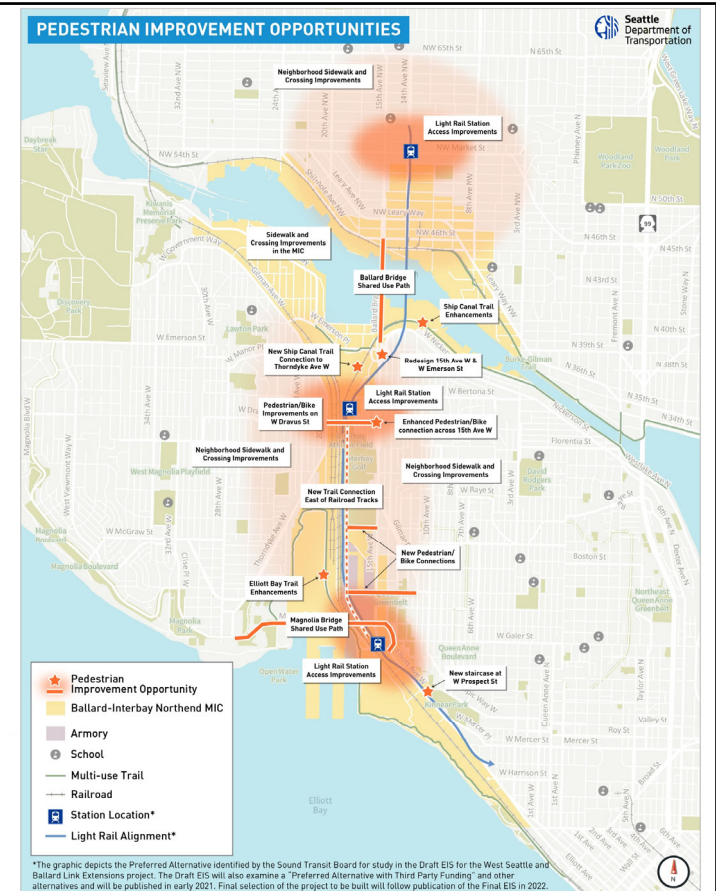




# Pedestrian network needs

Our analysis focused on:

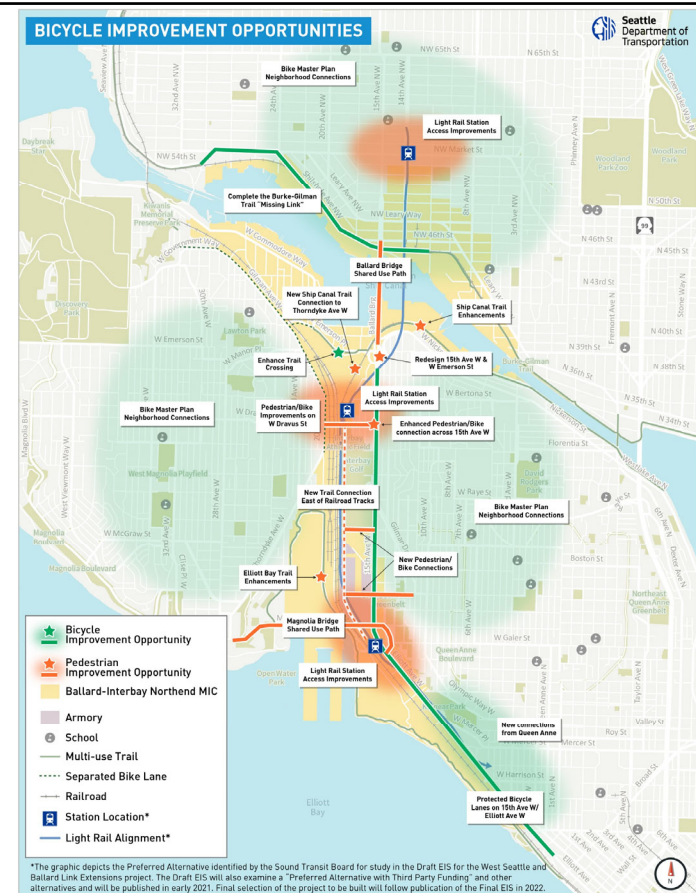
- Sidewalk presence and condition
- Crosswalk presence
- Distance between formal crossings along arterials
- Proximity to future light rail stations



# Bicycle network needs

Our analysis focused on:

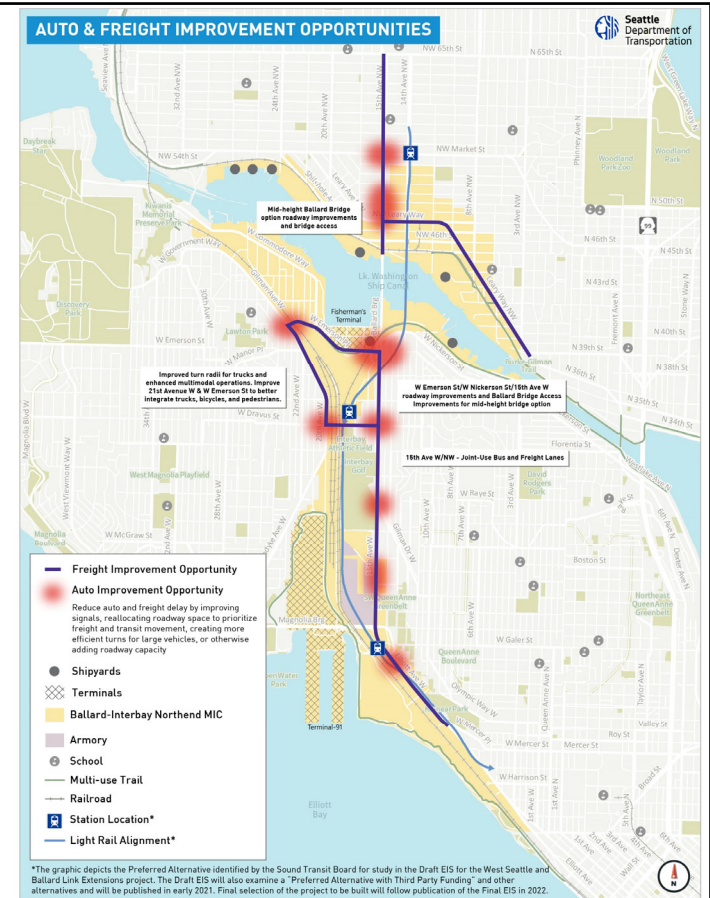
- Bicycle facility presence and type
- Level of comfort for people of all ages and abilities
- Distance to the nearest crosswalk along arterials
- Proximity to future light rail stations



# Auto and freight network needs

Our analysis focused on:

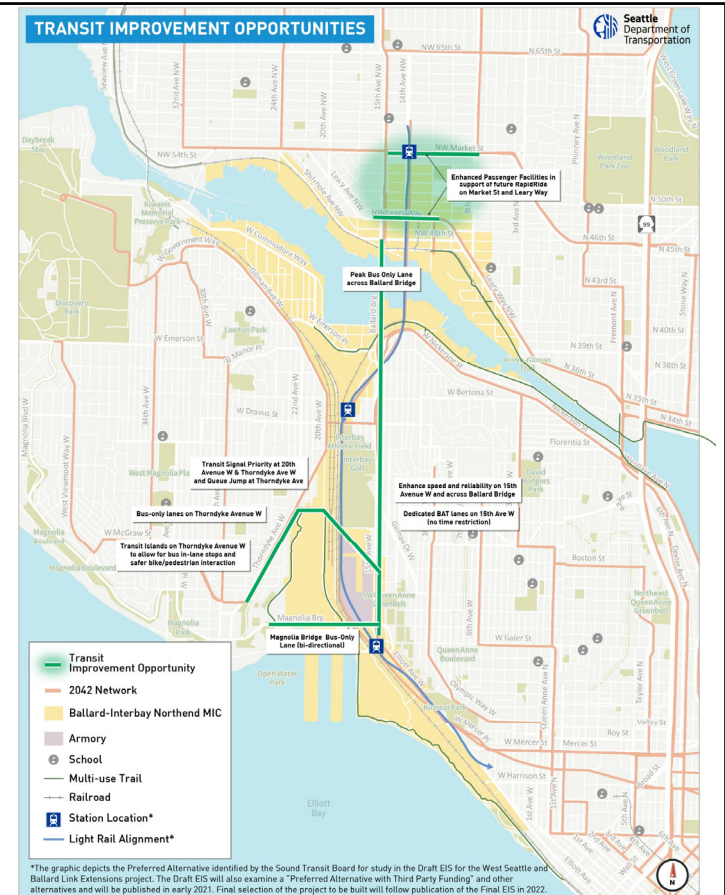
- Existing and projected future traffic volumes
- Intersection operations
- Freight travel times



# Transit network needs

## Our analysis focused on:

- Existing service (generally provided by King County Metro)
- Future services (including the West Seattle and Ballard Link Extensions and new and revised bus services assumed in the METRO CONNECTS 2040 bus network)



## Next steps for project identification

### Potential Investments

- ✓ Project ideas in planning documents
- ✓ Multimodal analysis
- Community and agency input



### Project Evaluation

- Goal 1. Improve mobility for people and freight
- Goal 2. Provide a system that safely accommodates all travelers
- Goal 3. Support timely and coordinated implementation



### Phased Improvements

- Evaluate and select projects
- Create phased project implementation plan per legislation

## Public Comment

- What comments do you have about the work completed to date or next steps for the BIRT Study?
- What do you want to make sure agency partners and the project team consider?

Visit [www.tinyurl.com/BallardInterbay](http://www.tinyurl.com/BallardInterbay) to provide comment!



**City of Seattle**



## Public comment protocol

- Comments are welcome from members of the public participating on the web and dialing in by phone
- The facilitator will recognize all commenters, alternating speaking opportunities for web- and phone-based participants
- If you are able to do so, please complete the sign-in form to indicate your interest

Ballard Interbay Regional Transportation System Interagency Team Meeting 5/21/2020

Please sign-in to the meeting by providing your name, organization or affiliation, and e-mail address to receive future communications about this project.

\* Required

1. Name \*

2. Organization(s) or affiliation(s) \*

3. Email address

4. Would you like to provide public comment during this meeting? Public comment will take place from 12:55-1:25 PM, time permitting. Comments will be limited to 2 minutes per person and invited on a first-come, first-serve basis.

Yes

No

5. Please use the space below to provide any additional written comments you would like to share with SDOT and the Interagency Team.

## Public comment protocol

- All: If you signed up via the online form, we will call on you in the order you completed the form
- Web participants: You may indicate if you would like to provide a verbal comment by stating your name in the chat window; wait for your name to be called
- Dial-in participants: We will invite you to take your turn to speak by stating the last 4 digits of your phone number (press \*6 to unmute yourself)
- Comments will be limited to 2 minutes per person

***Additional comments may be submitted using the form linked in the chat and on the next slide.***





## Public Comment

- What do you want to make sure agency partners and the project team consider?
- Have additional comments? Visit [www.tinyurl.com/BallardInterbay](http://www.tinyurl.com/BallardInterbay) to share them.



## Next Steps & Action Items

- What additional information do you need in the next two months?

Visit [www.tinyurl.com/BallardInterbay](http://www.tinyurl.com/BallardInterbay) to provide comment!



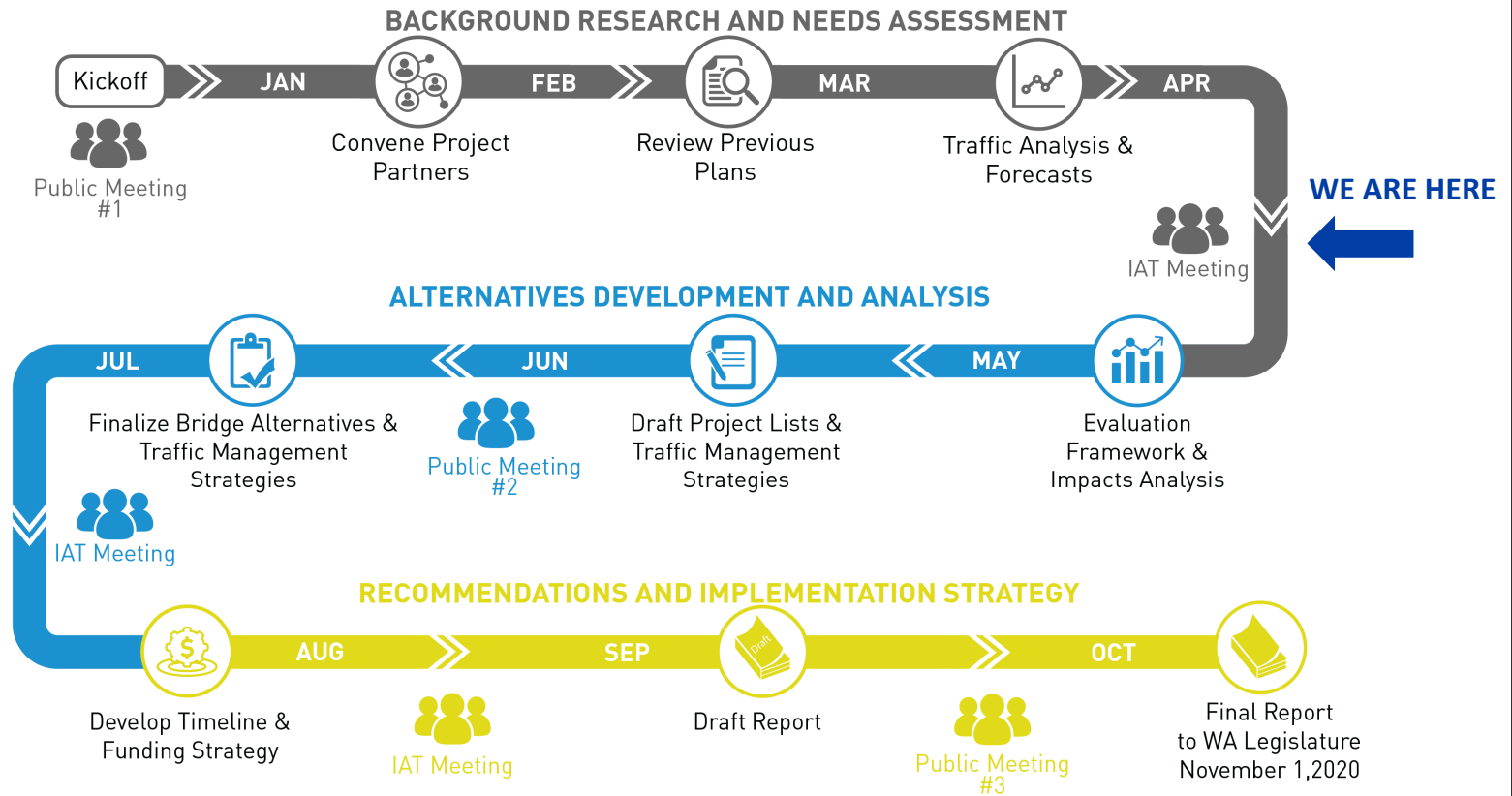
**City of Seattle**

## Immediate next steps

- **May 2020:** Draft strategies and project list, solicit business input
- **June 2020:** Public meeting to present draft project list and traffic management strategies
- **July 2020:** Finalize bridge alternatives and traffic management strategies



# Project timeline



## Upcoming IAT meetings and key topics

Meeting	Topics	Public Invited
Meeting #4 (mid-July)	<ul style="list-style-type: none"> <li>• Technical Findings and Preliminary Recommendations</li> <li>• Draft Bridge Replacement Timelines</li> <li>• Draft Traffic Management Plans</li> </ul>	Yes
Meeting #5	<ul style="list-style-type: none"> <li>• Draft Plan Recommendations</li> <li>• Final Timeline and Traffic Management Plans</li> <li>• Draft Funding Strategy</li> </ul>	Yes
Meeting #6 (if needed)	<ul style="list-style-type: none"> <li>• Final Review of Draft Plan</li> </ul>	No



# Questions?

[BallardInterbay@seattle.gov](mailto:BallardInterbay@seattle.gov)  
[www.seattle.gov/transportation/birt](http://www.seattle.gov/transportation/birt)

